

RED THREAD PROOF

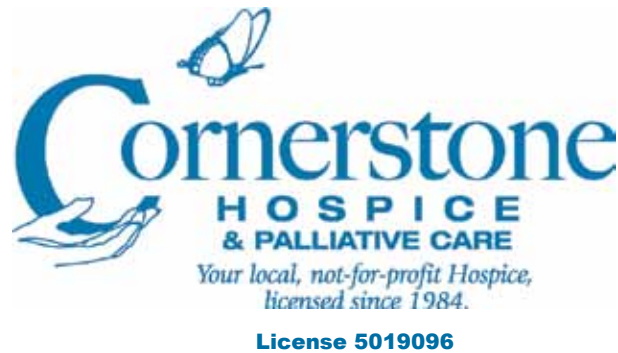
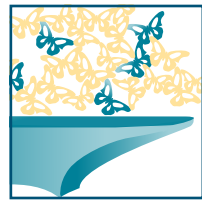
Giving & Remembrance Through Art

...Fine Art & Sculpture for Planned Giving

Cornerstone Hospice has been serving Central Florida for over 26 years. The high level of care we deliver is only possible through the generous support of our community.

To assist families who wish to thank Cornerstone for the help provided, and at the same time memorialize a loved one in a permanent way, we have created this unique collection of Fine Art & Sculpture – commissioned works by notable artists from our Central Florida area. This book contains suggestions that can be used to accomplish your goal of giving and recognition on a variety of levels. Your choice of art as a unique method of remembrance will brighten the lives of patients, family and caregivers – whether at a Hospice House, your home, corporate office or to enhance public/private indoor and outdoor spaces.

To receive assistance on the artwork that interests you, please call or email *Nick Buchholz, Executive Director*, at the number and address below. Nick will set up a time to meet with you to discuss your giving options in more detail.



“Imagine... your gift for all to enjoy at Hospice or in a special and personal place of peace and sharing...”

—Lee Conger, Vice President - Investment Officer, Certified Financial Planner™

Nick Buchholz, Executive Director | 888-728-6234 or 352-742-6800 | email: nbuchholz@cornerstonehospice.org

Red Thread, Inc. | The Creative Team

—A seasoned team of innovative talent provides creative solutions integrating art and nature in public spaces.

We've all been touched by Hospice one way or another, so when we were invited to design a collection of fine art pieces for the planned giving division, we immediately connected to the mission with heart-felt support.

Our initial concepts were created site-specific for the Conley House. However, as the art pieces developed on the drawing table and we gained a deeper understanding of the vast scope of the Hospice reach, the concepts grew to encompass the other Cornerstone Hospice locations and beyond. After countless sketches, think tank sessions, dozens of pencils and erasers used to nubs, our mission for Hospice is now realized with *Giving and Remembrance Through Art* —a donor handbook, offering a broad range of giving and philanthropic levels via fine art and sculpture.

At Red Thread Inc. our team concept begins with a lore — *The ancient Chinese believed that when people had a significant impact on your life they were forever linked to you by a red thread.* Our common thread of years of collaborations, professional experiences and resources gives us the Red Thread niche — back-to-basic solutions that connect the creative thread through design, fine art and 'art in your environment.'

Connecting this creative thread on the Hospice project, are three members of our team of fine artists, craftsmen and professionals. Carefully partnered with each design, concept and environment, our lead artists are stewards with specific talents and styles, who share the Hospice vision:

Doug Hays — Sculptor | Blacksmith

Works extensively with designers and builders producing commissioned, site-specific work since 1992. Experienced in making functional sculpture and specializes in exterior large scale sculpture of steel and stainless steel.

Brenda Heim — Abstract Painter | Collaborative Sculpture

Specializes in site-specific commissions for private and corporate sectors since 1989. In addition to primary studio works on canvas that vary from soothing color fields to highly energetic sweeps of flying color — works also include collaborative sculpture for public and private environments and silk textiles.

Kace Montgomery — Illustration | Design

Graphic design & illustration studio since 1989 — has introduced public art to municipalities, created an in-hospital arts and healing program and continues to incorporate the arts as tools for business branding. BA in Fine Arts, second degree in graphics and teaches at Lake Sumter Community College and the Lake Eustis Institute.

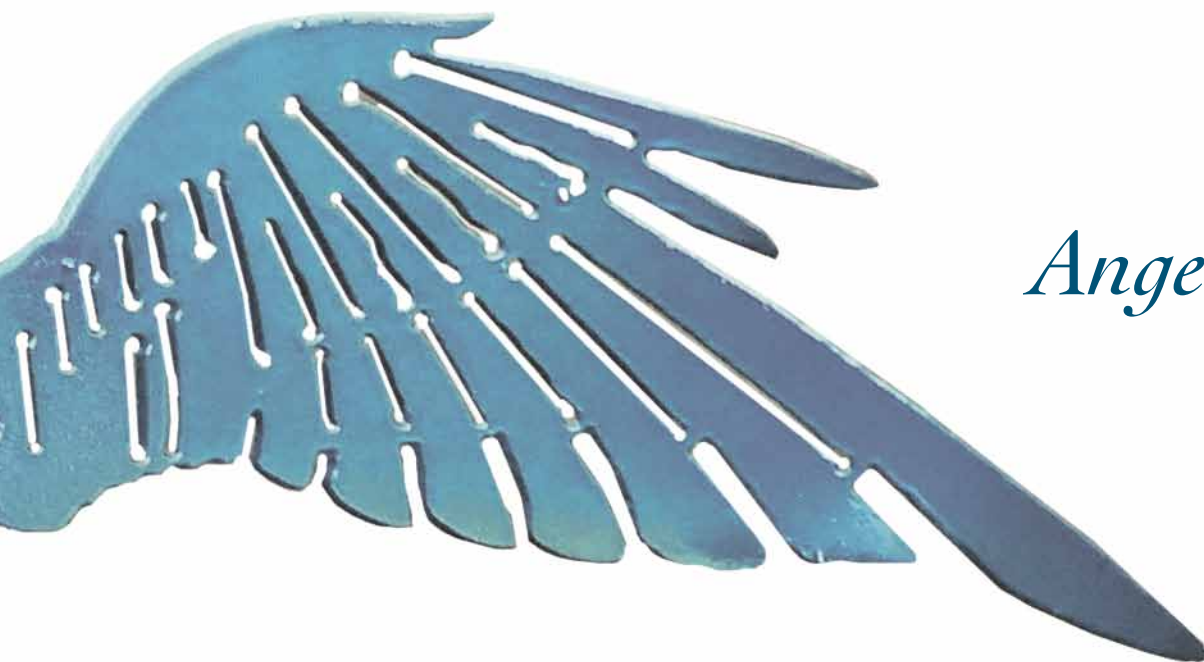
*Creative, nature-based and restorative environments,
inspire, nurture and promote a sense of well being...*


RED THREAD INC
DESIGN FINE ART ENVIRONMENT
...connecting the creative thread for business & art environments

WWW.RED-THREAD-INC.COM

ART IN ENVIRONMENT
FOR CORNERSTONE HOSPICE

RED THREAD PROOF



Angel Wing Bench

Nick Buchholz, Executive Director | 888-728-6234 or 352-742-6800 | email: nbuchholz@cornerstonehospice.org

RED THREAD PROOF



Angel Wing Bench | Artist's Maquette
Artist: Doug Hays

Angel Wing Bench

6'w x 4'h x 2'd | powder coated steel
details: color options may vary per location
placed donor recognition



RED THREAD PROOF



The Heron
...a water sculpture

Nick Buchholz, Executive Director | 888-728-6234 or 352-742-6800 | email: nbuchholz@cornerstonehospice.org

RED THREAD PROOF

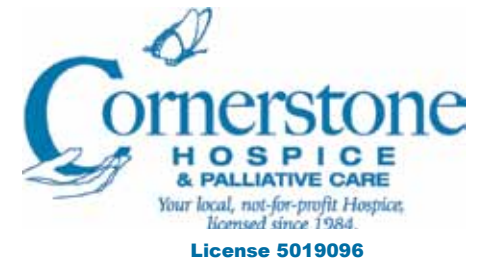


The Heron | Artist's Maquette
Artist: Doug Hays

©2011 Doug Hays, Red Thread Inc., Cornerstone Hospice

Heron Sculpture

6' in height | stainless steel
details: natural oxidation will enhance the lustre of the stainless steel
donor recognition adjacent



RED THREAD PROOF



*Butterfly Sculpture
...a landmark*

Nick Buchholz, Executive Director | 888-728-6234 or 352-742-6800 | email: nbuchholz@cornerstonehospice.org

RED THREAD PROOF

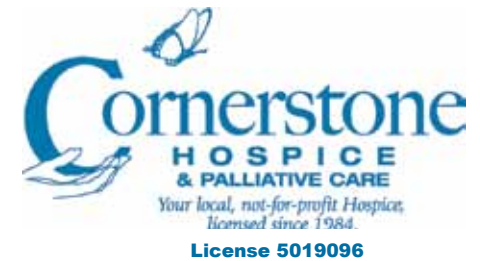


Butterfly Sculpture | Artist's Rendering
Artist: Doug Hays

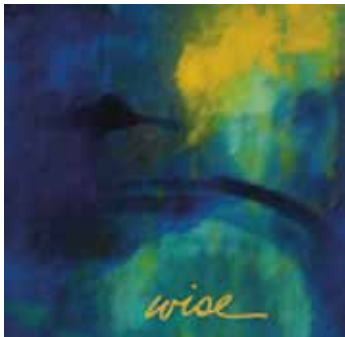
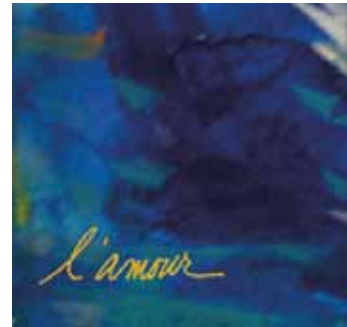
©2011 Doug Hays, Red Thread Inc., Cornerstone Hospice

Butterfly Sculpture

20'h x 8'w x 8'd | stainless and mild steel
details: mild steel will oxidize over time
and develop a rich burgundy patina
donor recognition adjacent

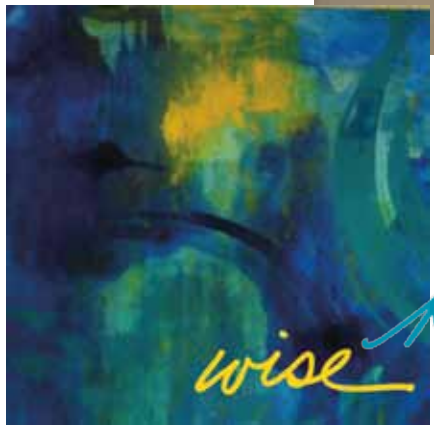


RED THREAD PROOF



*The Journey
...canvas panels*

RED THREAD PROOF



*brave
kind*

patriotic

The Journey | Artist's Study
Artist: Brenda Heim

The Journey

24, 12" x 12" panels
8'w x 3'h | acrylic on canvas
details: donor selection of word will be inscribed on each panel
adjacent plaque will provide donor name and word



RED THREAD PROOF



Florida Landscape Screen

Nick Buchholz, Executive Director | 888-728-6234 or 352-742-6800 | email: nbuchholz@cornerstonehospice.org

RED THREAD PROOF

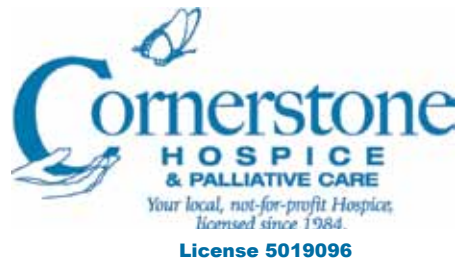


Florida Landscape Screen

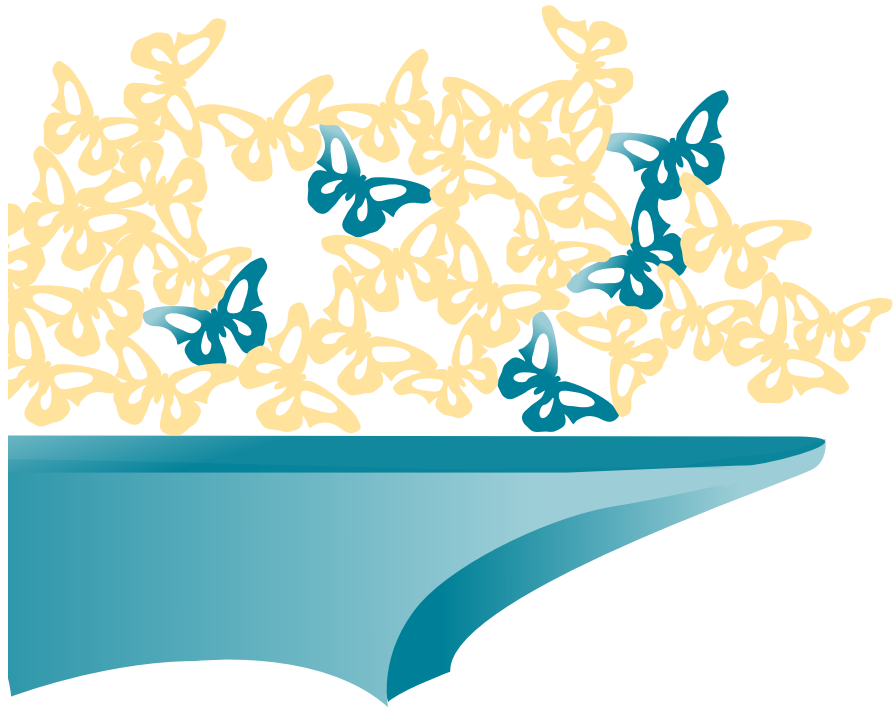
4'w x 6'h | aluminum
details: an application of art in architecture
donor recognition adjacent

Landscape Screen | Artist's Maquette
Artist: Doug Hays

©2011 Doug Hays, Red Thread Inc., Cornerstone Hospice



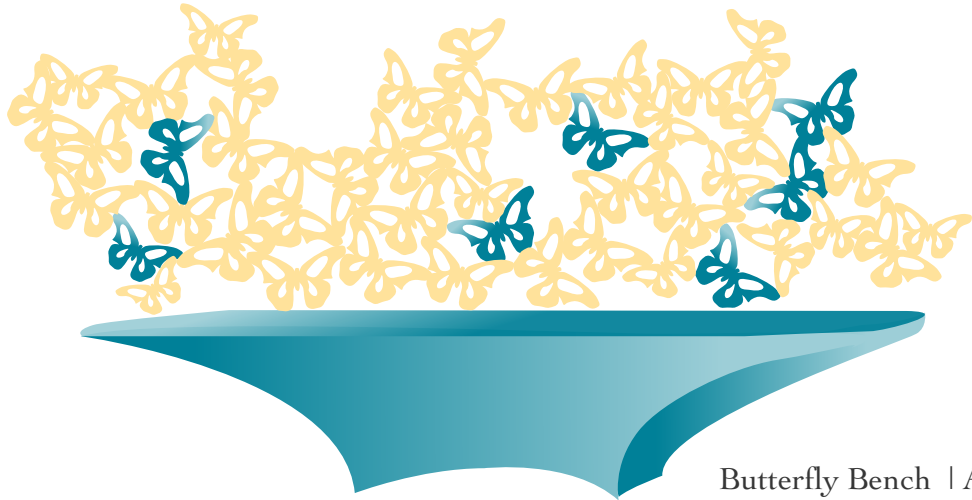
RED THREAD PROOF



Butterfly Bench

Nick Buchholz, Executive Director | 888-728-6234 or 352-742-6800 | email: nbuchholz@cornerstonehospice.org

RED THREAD PROOF

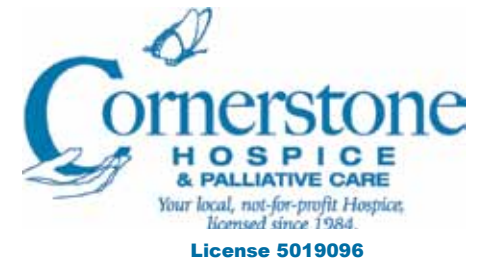


Butterfly Bench | Artist's Rendering
Artist: Doug Hays

©2011 Doug Hays, Red Thread Inc., Cornerstone Hospice

Butterfly Bench

6'w x 4'h x 2'd | powder coated steel
details: color options may vary per location
donor recognition adjacent



RED THREAD PROOF



Leaf Donor Panel

RED THREAD PROOF



Leaf Donor Panel

3'w x 4-5'h | aluminum & copper
details: donor names scribed on 5" x 2" copper leaves
donor recognition adjacent

Leaf Donor Panel | Artist's Rendering
Artist: Red Thread Collaboration

©2011 Red Thread Inc., Cornerstone Hospice

